

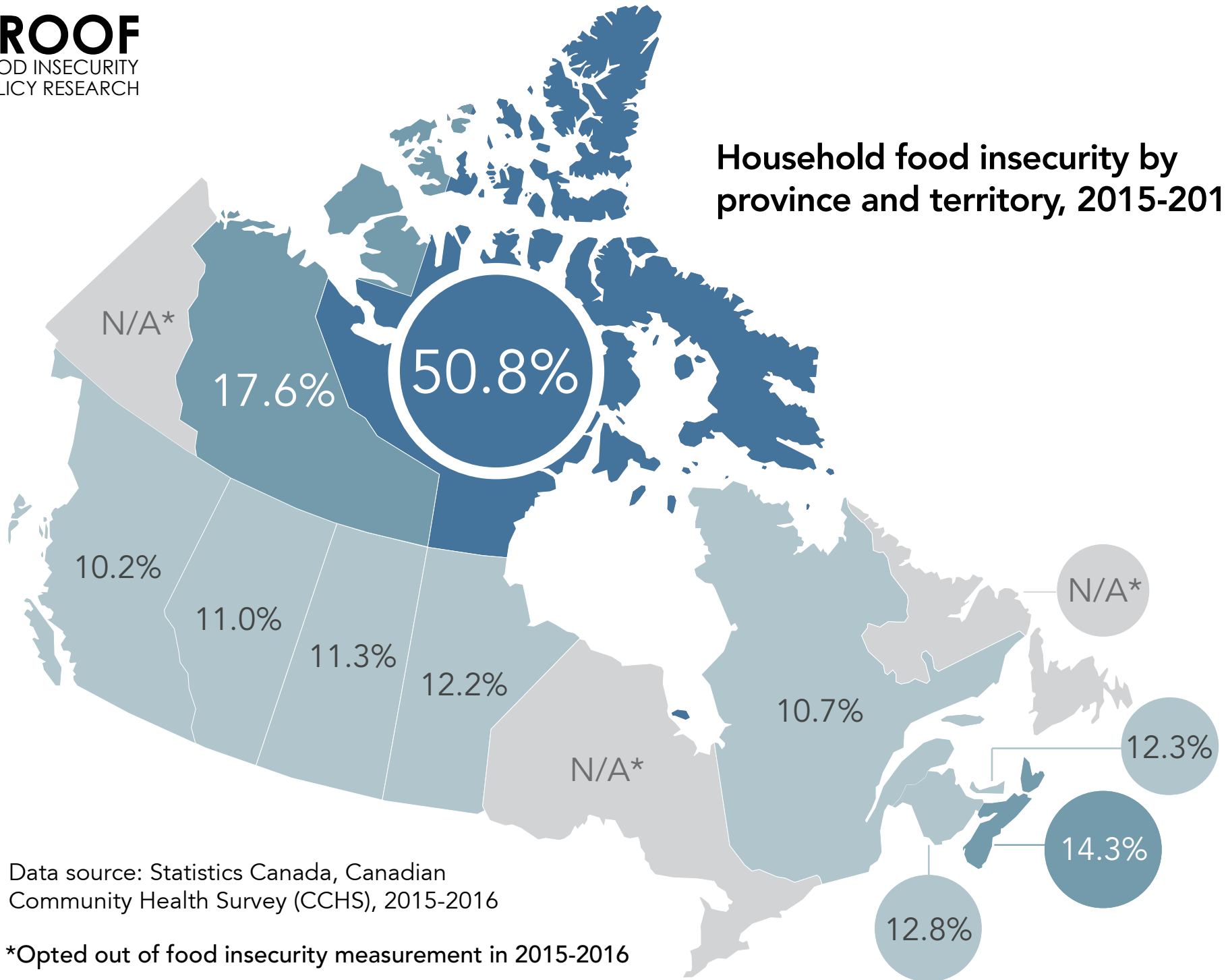
# Household Food Insecurity in Canada, 2015-16

## Graphic Series Preview



**PROOF**  
FOOD INSECURITY  
POLICY RESEARCH

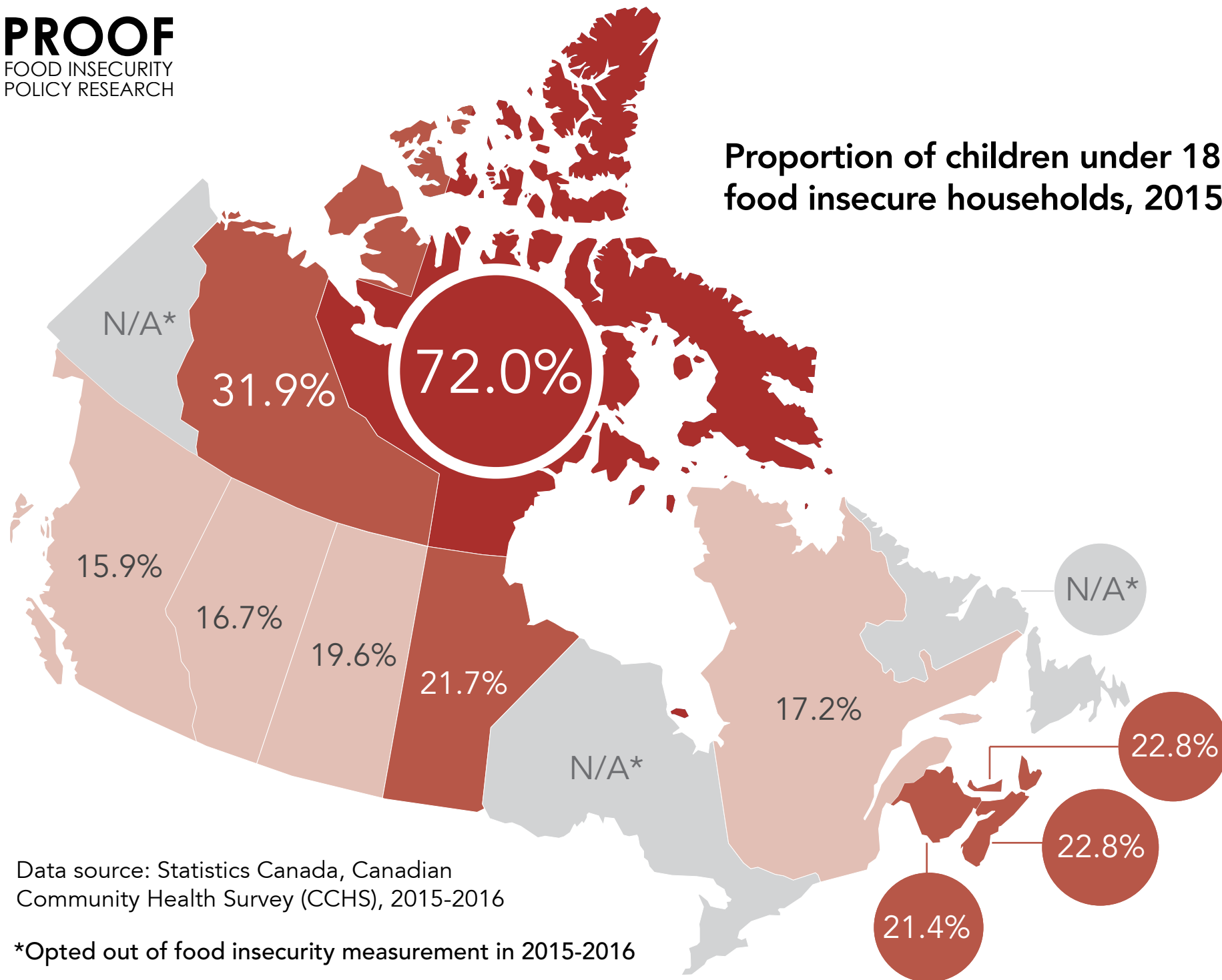
## Household food insecurity by province and territory, 2015-2016



Data source: Statistics Canada, Canadian Community Health Survey (CCHS), 2015-2016

\*Opted out of food insecurity measurement in 2015-2016

## Proportion of children under 18 in food insecure households, 2015-2016



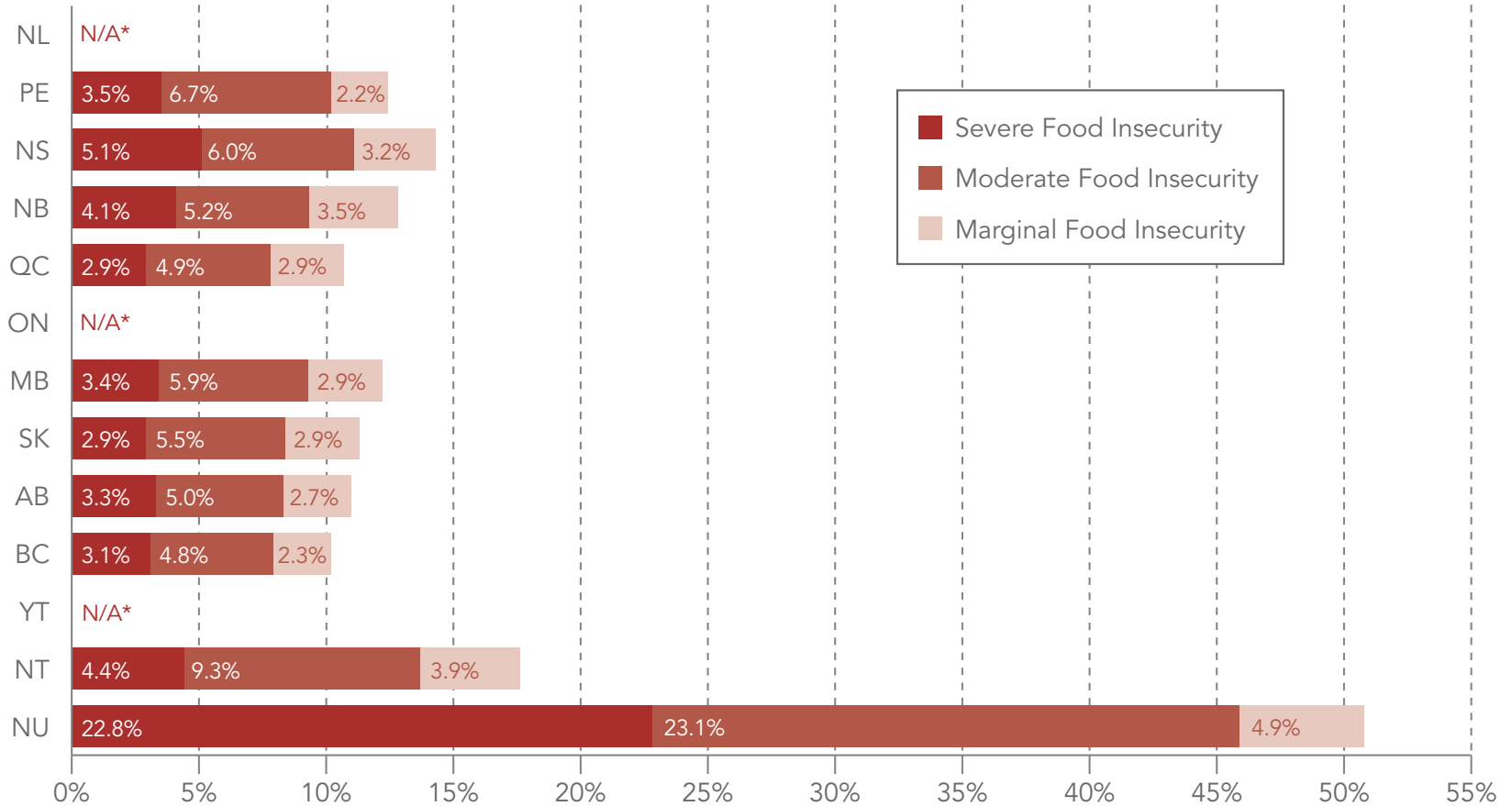
Data source: Statistics Canada, Canadian Community Health Survey (CCHS), 2015-2016

\*Opted out of food insecurity measurement in 2015-2016

# Household food insecurity in Canada by province & territory, 2015-2016

\*Opted out of food insecurity measurement in 2015-2016

Data Source: Statistics Canada, Canadian Community Health Survey (CCHS), 2015-2016

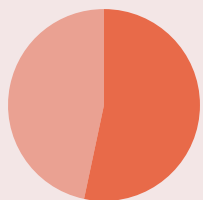
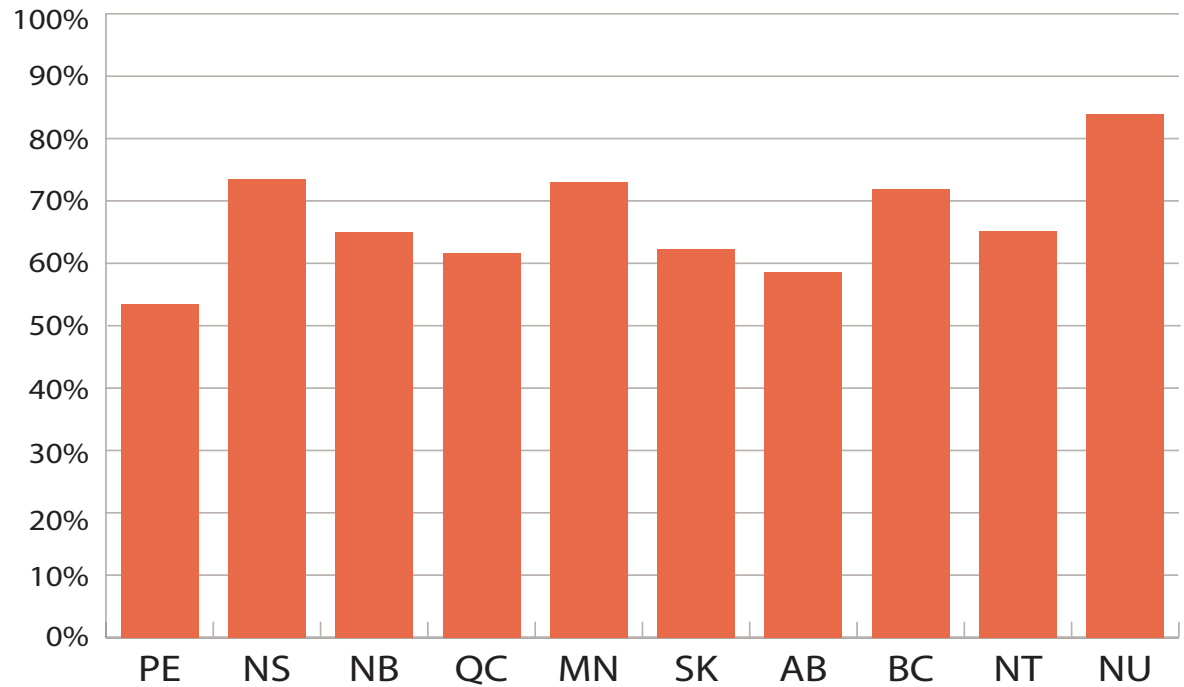


# CCHS 2015-16 HOUSEHOLD FOOD INSECURITY & SOCIAL ASSISTANCE

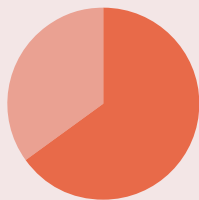
Social assistance programs\* vary among provinces and territories, but being on social assistance anywhere in Canada poses an extremely high risk of food insecurity.

Data Source: Statistics Canada, Canadian Community Health Survey (CCHS) 2015-16. Newfoundland and Labrador, Ontario, and Yukon opted out of food insecurity measurement in this cycle.

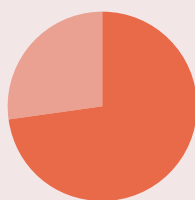
Proportion of households reliant on social assistance who are food insecure



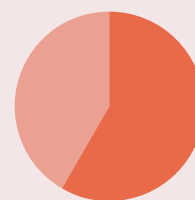
Prince Edward Island



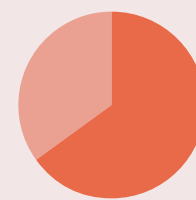
New Brunswick



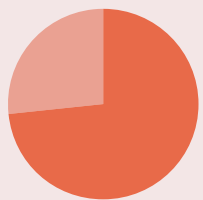
Manitoba



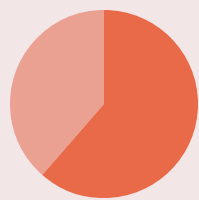
Alberta



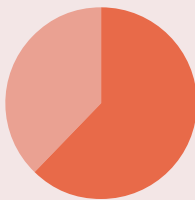
Northwest Territories



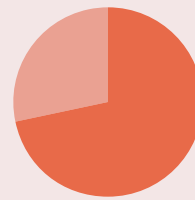
Nova Scotia



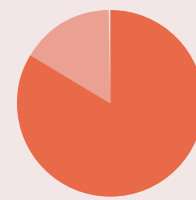
Quebec



Saskatchewan

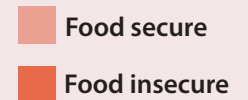


British Columbia



Nunavut

Food security status among households reliant on social assistance, by province



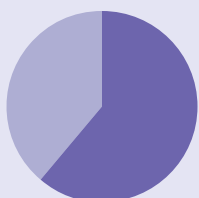
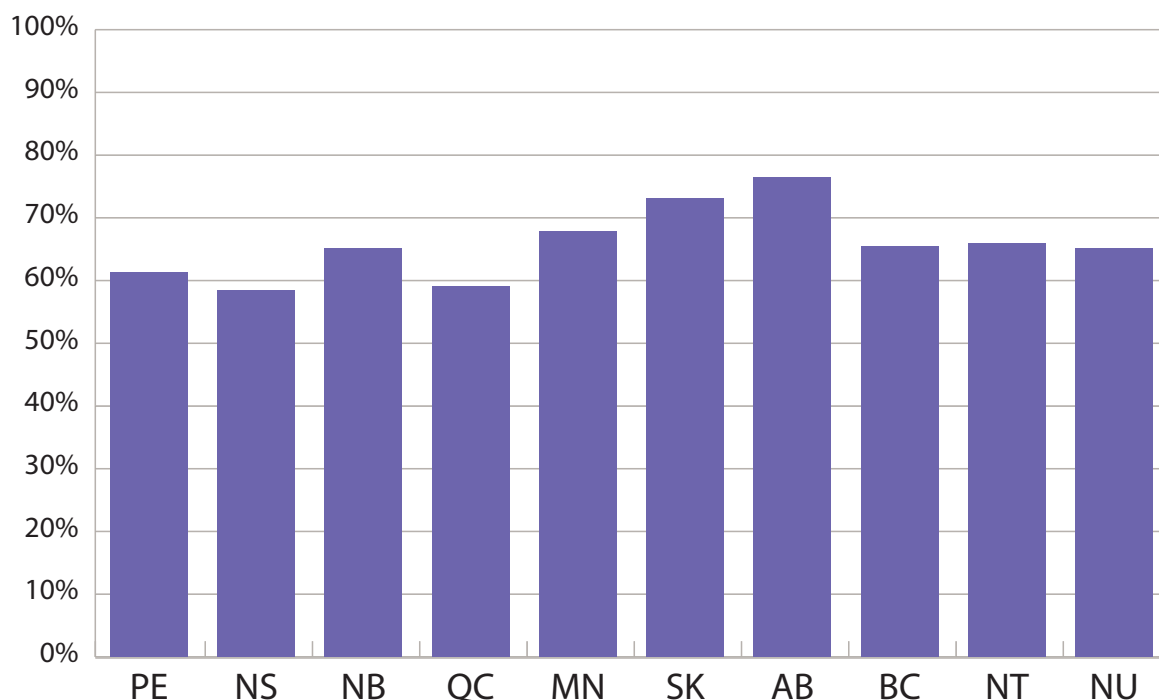
\* Data available from CCHS do not allow for differentiation between general welfare programs and disability support programs

# CCHS 2015-16 HOUSEHOLD FOOD INSECURITY & EMPLOYMENT

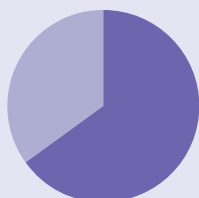
Most food insecure households rely on wages and salaries as their main source of income. Being in the workforce is not enough to protect from food insecurity.

Data Source: Statistics Canada, Canadian Community Health Survey (CCHS) 2015-16. Newfoundland and Labrador, Ontario, and Yukon opted out of food insecurity measurement in this cycle.

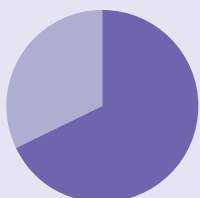
Proportion of food insecure households reliant on wages and salaries



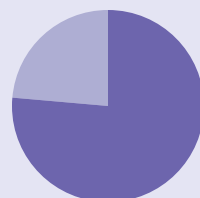
Prince Edward Island



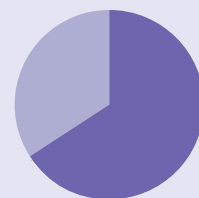
New Brunswick



Manitoba



Alberta



Northwest Territories



Nova Scotia



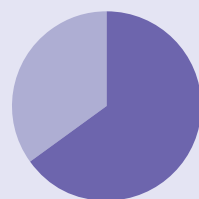
Quebec



Saskatchewan



British Columbia



Nunavut

Main source of income among food insecure households, by province

- Wages and salaries
- Other

# CCHS 2015-16 Provincial & Territorial Food Insecurity Profiles

Household food insecurity remains a serious problem in Canada. Provincial prevalence estimates range from 10.2% in British Columbia to 50.8% in Nunavut. At least 1 in 6 children under 18 live in a home that struggles to put food on the table. Households reliant on social assistance are more likely than not to be food insecure. Simply having a job is not enough to protect from food insecurity, as most food insecure households in Canada rely on wages and salaries.

Data Source: Statistics Canada, Canadian Community Health Survey (CCHS) 2015-16. Newfoundland and Labrador, Ontario, and Yukon opted out of food insecurity measurement in this cycle. Rates of food insecurity are not comparable to previous years of CCHS due to a new sampling strategy. The term 'children' refers to those under 18.

## Alberta

- 11%** of households are food insecure
- 16.7%** of children live in food insecure households
- 76.5%** of food insecure households rely on wages and salaries
- 58.6%** of those reliant on social assistance are food insecure

## British Columbia

- 10.2%** of households are food insecure
- 15.9%** of children live in food insecure households
- 65.5%** of food insecure households rely on wages and salaries
- 71.9%** of those reliant on social assistance are food insecure

**12.2%** of households are food insecure

**21.7%** of children live in food insecure households

**67.8%** of food insecure households rely on wages and salaries

**73%** of those reliant on social assistance are food insecure

## Manitoba

**10.7%** of households are food insecure

**17.2%** of children live in food insecure households

**59.1%** of food insecure households rely on wages and salaries

**61.6%** of those reliant on social assistance are food insecure

## Quebec

## New Brunswick

**12.8%** of households are food insecure

**21.4%** of children live in food insecure households

**65.1%** of food insecure households rely on wages and salaries

**65%** of those reliant on social assistance are food insecure

## Nova Scotia

- 14.3%** of households are food insecure
- 22.8%** of children live in food insecure households
- 58.4%** of food insecure households rely on wages and salaries
- 73.5%** of those reliant on social assistance are food insecure

**50.8%** of households are food insecure

**72%** of children live in food insecure households

**65.2%** of food insecure households rely on wages and salaries

**83.9%** of those reliant on social assistance are food insecure

## Prince Edward Island

**12.3%** of households are food insecure

**22.8%** of children live in food insecure households

**61.3%** of food insecure households rely on wages and salaries

**53.5%** of those reliant on social assistance are food insecure

**11.3%** of households are food insecure

**19.6%** of children live in food insecure households

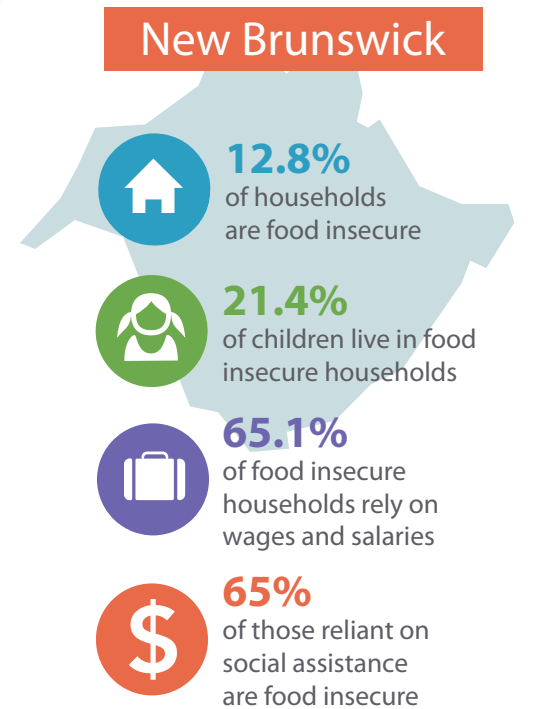
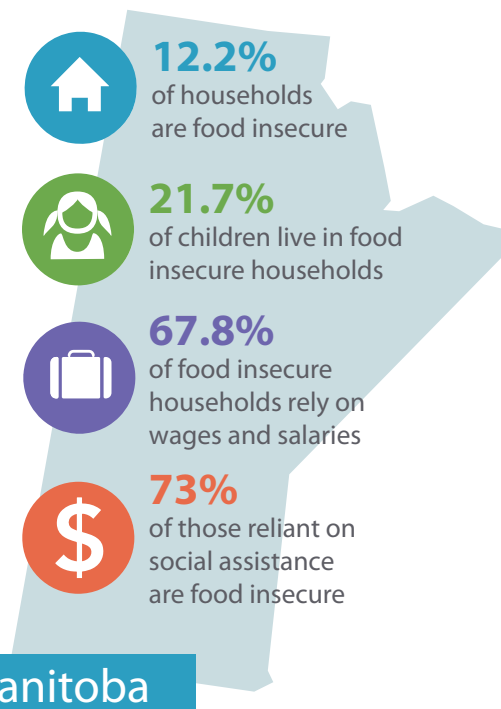
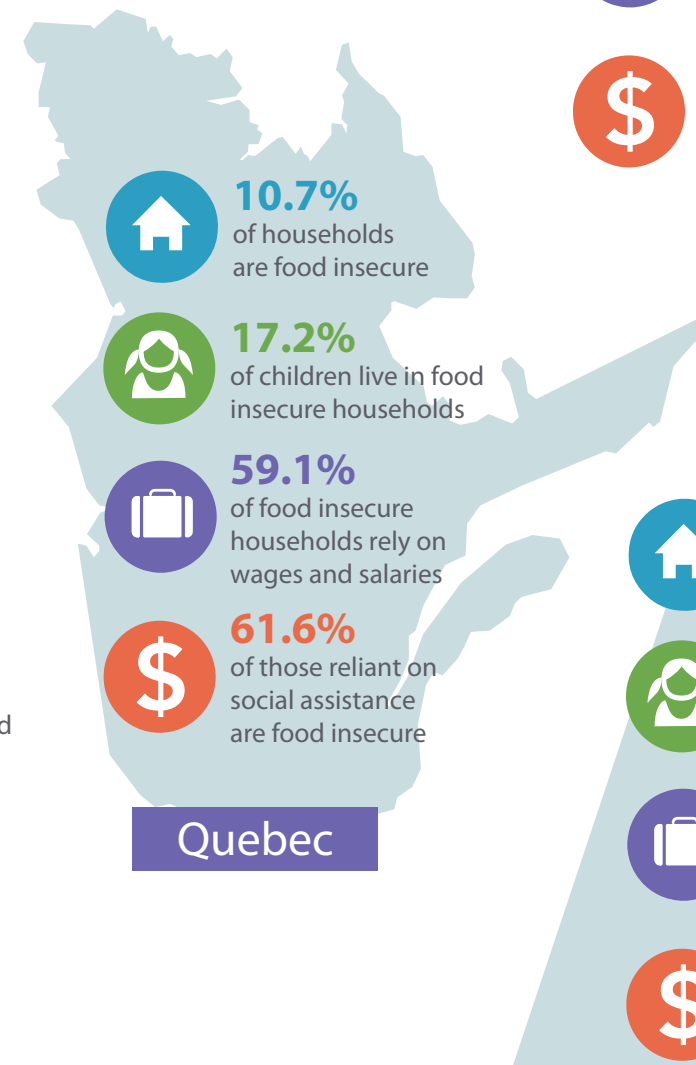
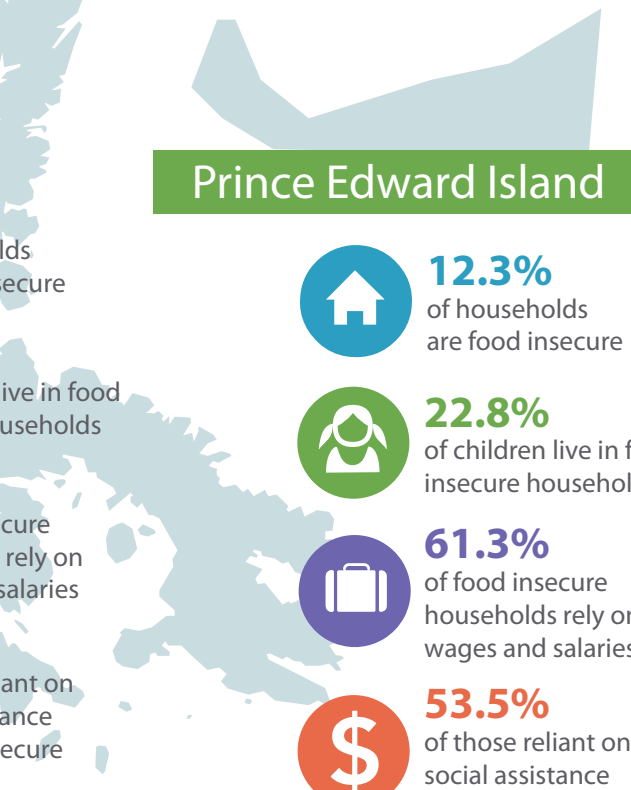
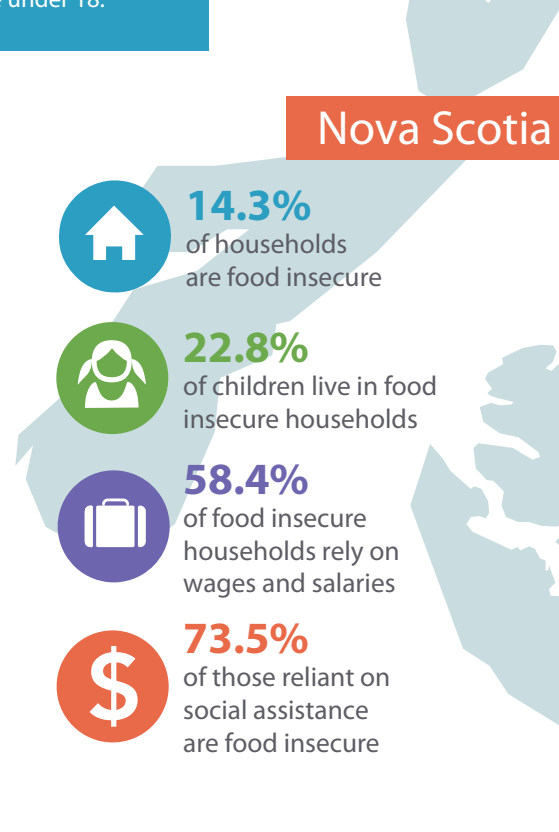
**73.1%** of food insecure households rely on wages and salaries

**62.3%** of those reliant on social assistance are food insecure

## Northwest Territories

- 17.6%** of households are food insecure
- 31.9%** of children live in food insecure households
- 66%** of food insecure households rely on wages and salaries
- 65.2%** of those reliant on social assistance are food insecure

## Nunavut



## Saskatchewan